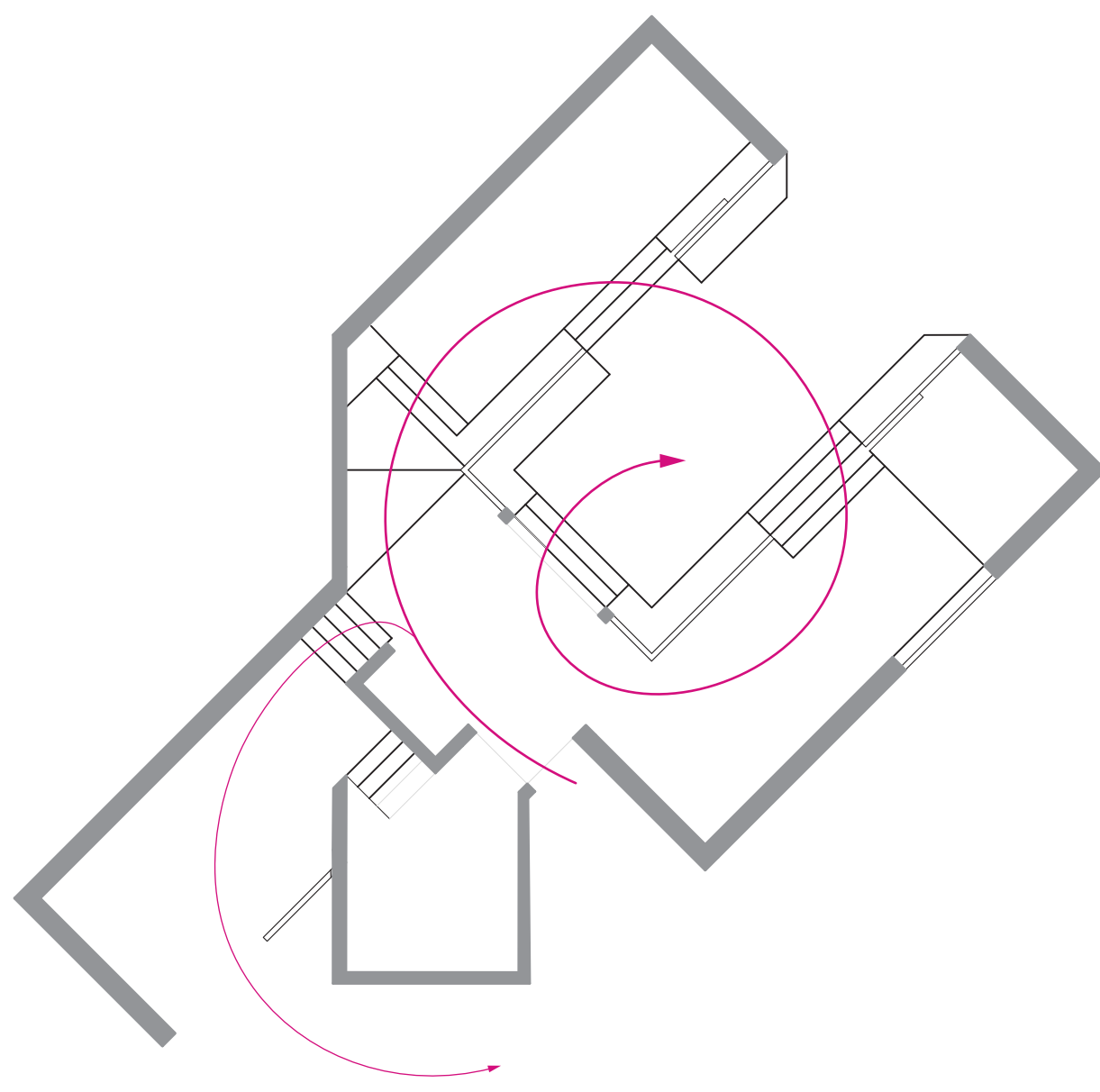
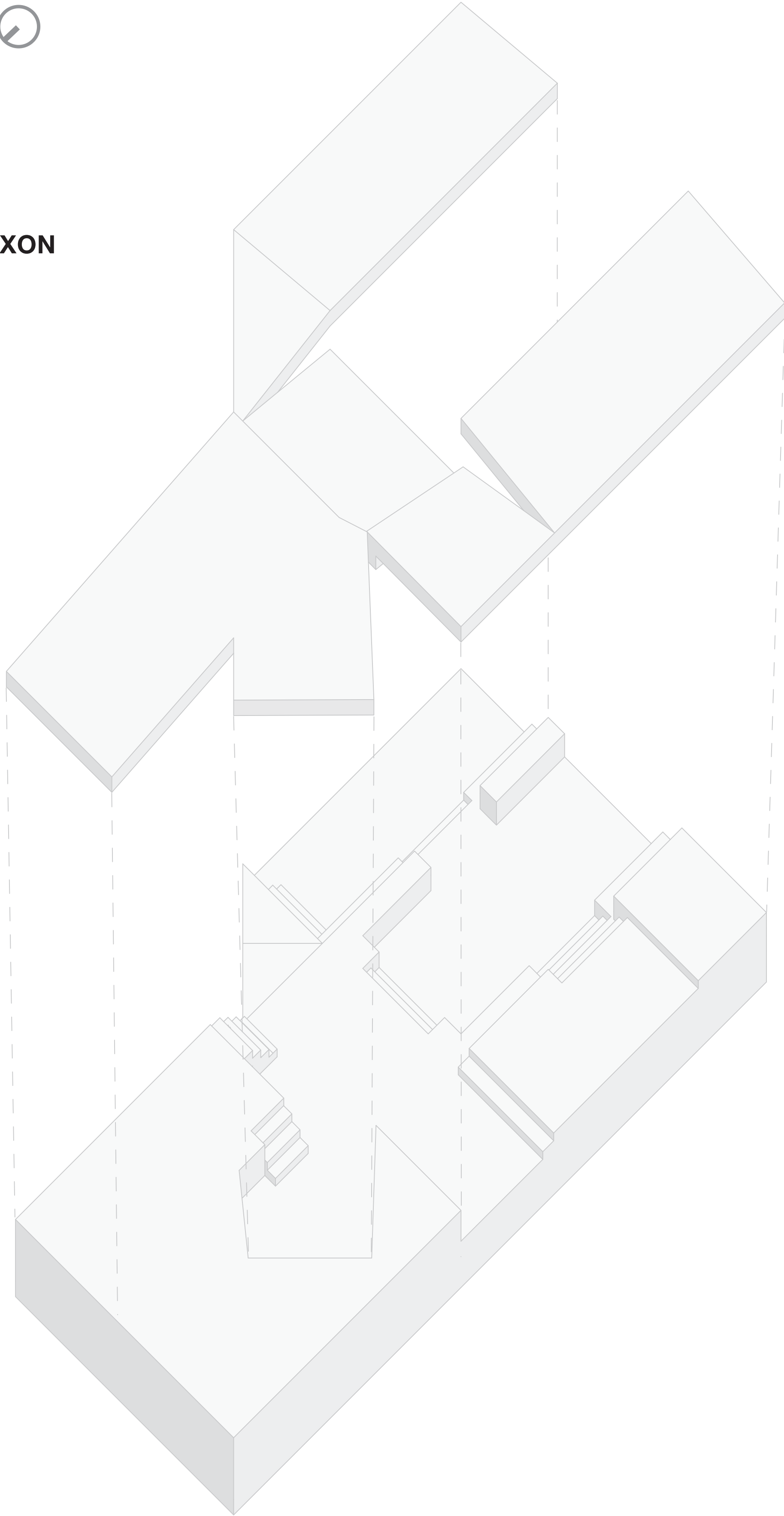


PRIVATE PATH →

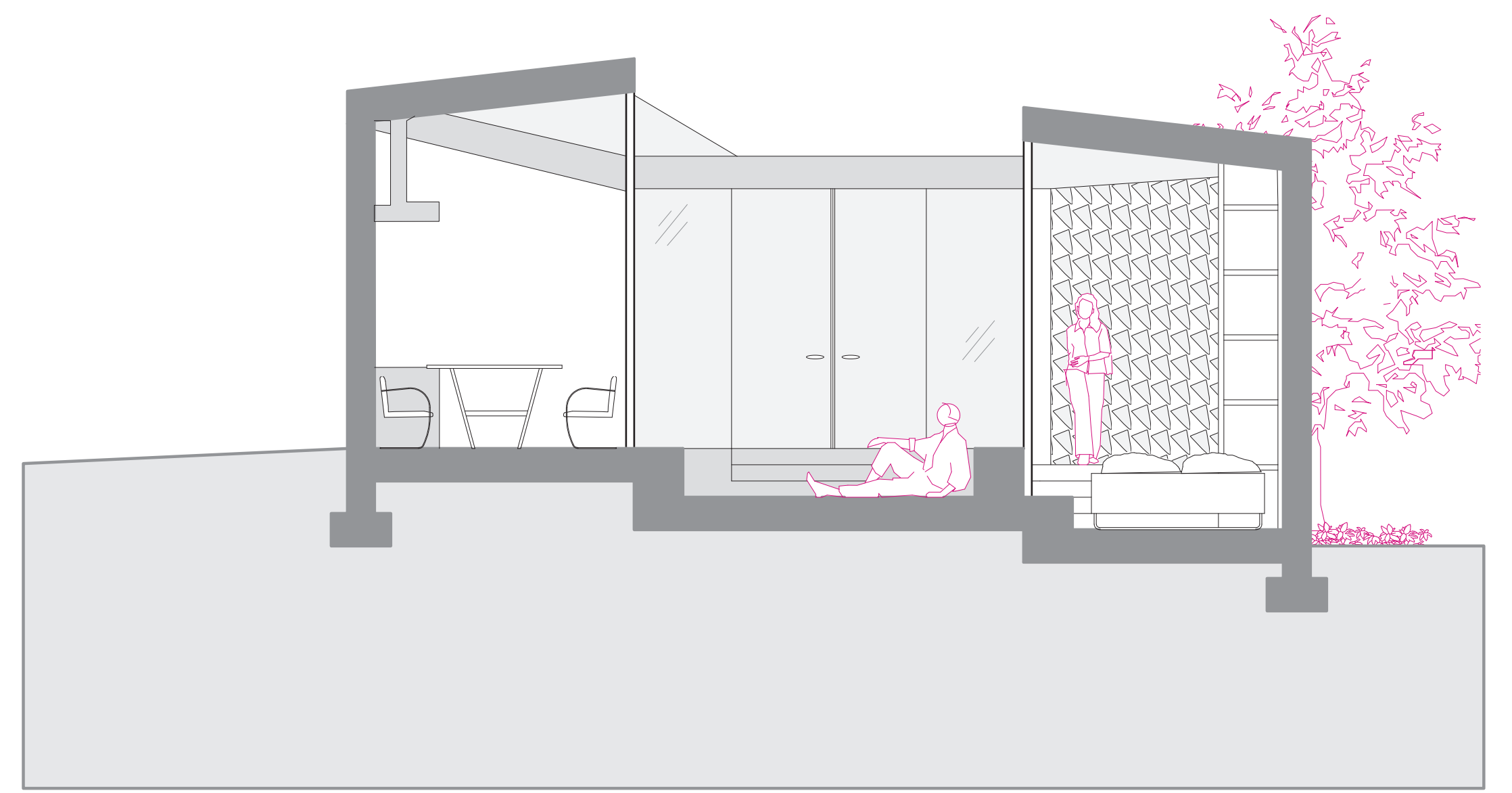
PUBLIC PATH →



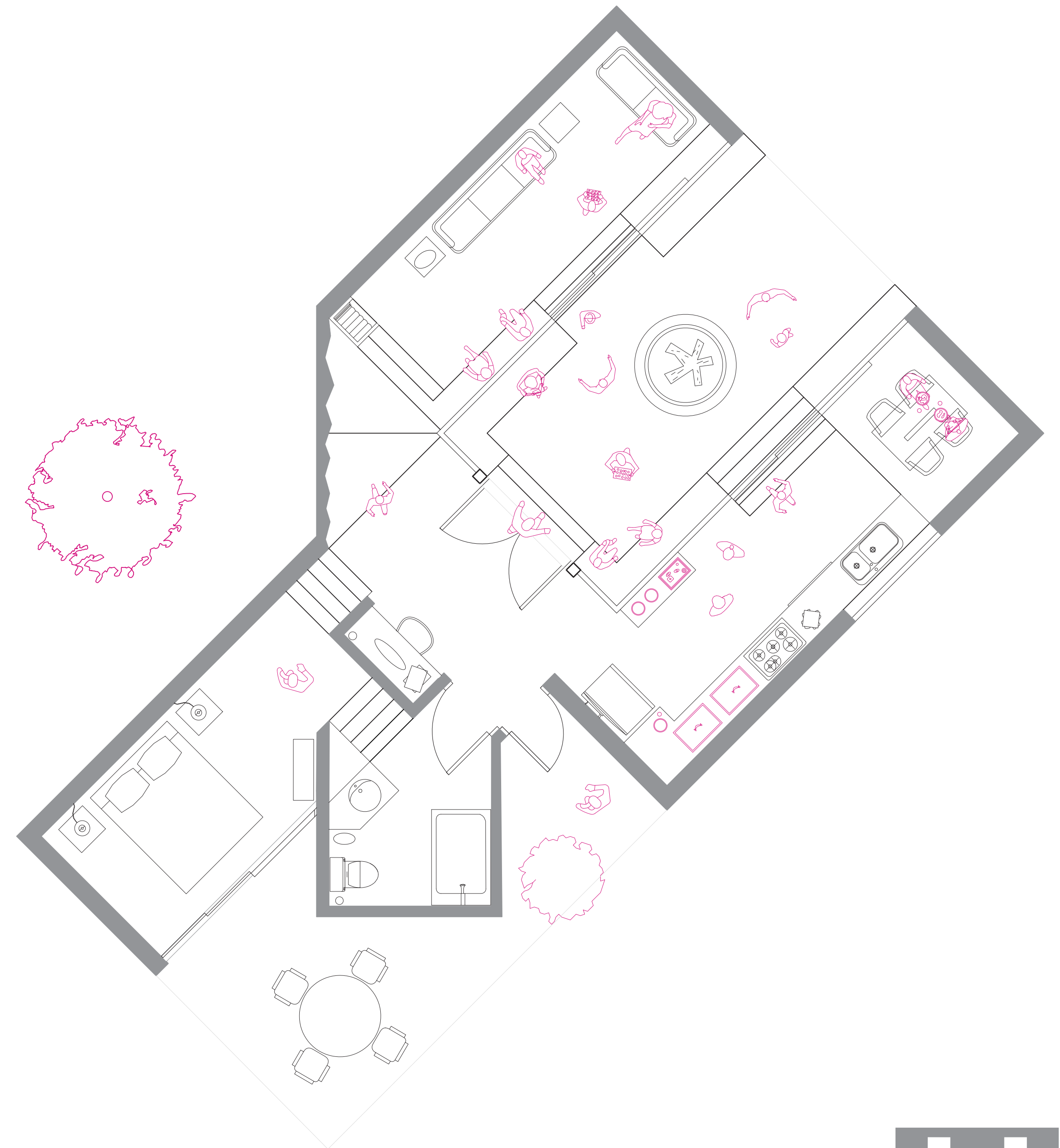
CIRCULATION
1/8" = 1'-0"



ROOF-FLOOR AXON
3/16" = 1'-0"



SECTION LOOKING NORTH
1/4" = 1'-0"



FLOOR PLAN
1/4" = 1'-0"

TPOLOGY

Horizontal Home, 1200 S.F.

OCCUPANTS

Single Couple, early 30s, no kids, big entertainers

DESCRIPTION

U House is derived from the ancient roman domus, a inward facing housing typology that is centered on an outdoor courtyard space. Using a standardized spatial dimension of 8' x 20', U House's courtyard is framed by a kitchen, living space, and circulation corridor. The 3 parts that frame the courtyard are faced with floor to ceiling glass panels that create an ambiguous transition from indoor to outdoor space. Off the public areas is the more private bedroom and bathroom, that face another private courtyard space.

